

**RIVERSIDE  
COUNTY**

***Head Start/Early Head Start***



**RIVERSIDE COUNTY  
OFFICE OF EDUCATION**  
JUDY D. WHITE, Ed.D. | County Superintendent of Schools

# *Annual Report*

**2018-2019**





# *Pledge, Mission, Vision, and Core Values*

## PLEDGE

**Every student in Riverside County will graduate from high school academically and socially prepared for college, the workforce, and civic responsibility.**

## MISSION

**The mission of the Riverside County Office of Education is to ensure the success of all students through extraordinary service, support, and partnerships.**

## VISION

**The vision of the Riverside County Office of Education is to be a collaborative organization characterized by the highest quality employees providing leadership, programs, and services to school districts, schools, and students countywide.**

## CORE VALUES

- **Building Relationships That Promote Trust**
- **Engaging in Open and Honest Communication**
- **Focusing on the Needs of Students and Children**

The Riverside County Office of Education (RCOE) provides specific educational, financial, legislative, and leadership services and support to all K-12 school districts in Riverside County. As an organization, it is comprised of the elected Riverside County Superintendent of Schools and the array of individuals employed by the County Superintendent to help fulfill their statutory duties and responsibilities. A seven member elected County Board of Education is affiliated with the RCOE.

The RCOE Division of Early Learning Services provides direct oversight of Federally funded programs including Head Start, Early Head Start and Early Head Start - Child Care Partnerships. These programs serve income-eligible families as well as families experiencing homelessness and children in foster care. By focusing on high quality school readiness programming and evidenced-based curricula as well as comprehensive health services, family support services and healthy meals, Head Start remains ever committed to early childhood education and empowering families on their path to self-sufficiency and life-long success.

The Riverside County Office of Education (RCOE) has been the sole Head Start Grantee for Riverside County since 1975 and was awarded the Early Head Start grant in 1998. In 2015, RCOE received the Early Head Start Child Care Partnership Grant (EHS-CCP), further expanding its Early Head Start programming.

The program operated a variety of program options designed to meet community needs by offering a comprehensive array of program options including home-based programming as well as part-day and full-day center options.



**18**

**HOME-BASED GROUPS**

**9 RCOE HOME-BASED GROUPS**

**9 DELEGATE HOME-BASED GROUPS**



**70**

**CENTERS**

**17 RCOE CENTERS**



**52 RCOE PART-DAY CLASSES**



**31 RCOE FULL-DAY CLASSES**

**53 DELEGATE AGENCY CENTERS**



**78 DELEGATE PART-DAY CLASSES**



**50 DELEGATE FULL-DAY CLASSES**



**3,788**  
VOLUNTEERS

**501**  
PROGRAM STAFF

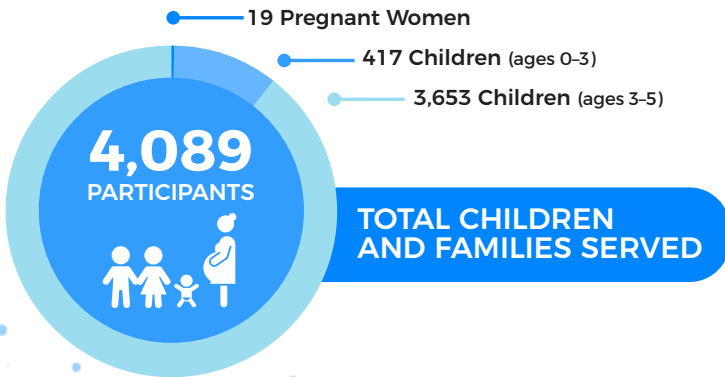
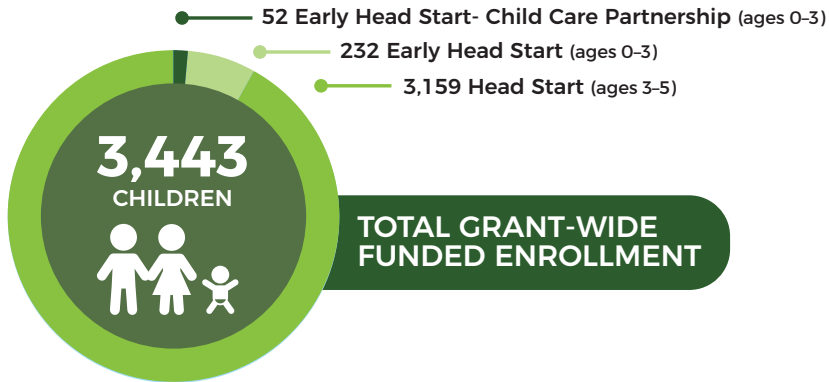
**194**  
TEACHERS

**158**  
INSTRUCTIONAL  
AIDES

**18**  
HOME  
VISITORS

**69**  
FAMILY SERVICE  
WORKERS

# Enrollment & Attendance (Cumulative)



**EHS-CCP AVERAGE MONTHLY ENROLLMENT**  
*(of funded enrollment)*  
**52 OR 100%**



**EHS AVERAGE MONTHLY ENROLLMENT**  
*(of funded enrollment)*  
**232 OR 100%**



**HS AVERAGE MONTHLY ENROLLMENT**  
*(of funded enrollment)*  
**3,386 OR 99%**



**87%**

**EHS/ EHS-CCP AVERAGE DAILY ATTENDANCE**

**90%**

**HS AVERAGE DAILY ATTENDANCE**

# Comprehensive Services



**99.6%**  
PERCENTAGE OF  
CHILDREN WITH  
A MEDICAL HOME

**99.9%**  
PERCENTAGE OF  
CHILDREN WITH  
HEALTH INSURANCE

**80.6%**  
PERCENTAGE OF  
CHILDREN UP TO DATE ON  
HEALTH REQUIREMENTS

**99.6%**  
PERCENTAGE OF  
CHILDREN UP TO DATE  
ON IMMUNIZATIONS



**93.1%**  
PERCENTAGE OF  
CHILDREN WHO RECEIVED  
DENTAL ASSESSMENTS/EXAMS

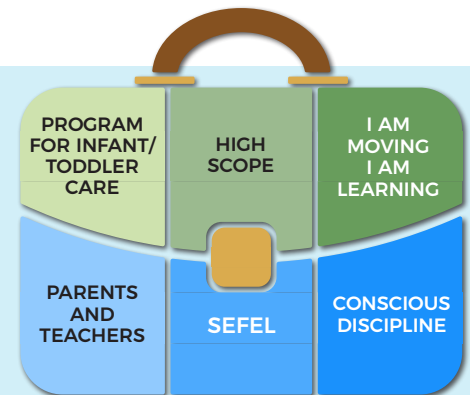
**98.4%**  
PERCENTAGE OF  
CHILDREN WITH  
A DENTAL HOME



**16.4%**  
PERCENTAGE OF  
CHILDREN WITH  
IDENTIFIED SPECIAL NEEDS

# Curriculum

Head Start is committed to preparing all students for school and continued future success. With a focus on five essential domains: (1) approaches to learning, (2) social emotional development, (3) language and literacy, (4) cognitive, (5) perceptual motor and physical development, the program works hard to ensure strong school readiness skills for every student. The curricula are aligned with the *California Preschool Learning Foundations* alongside a variety of evidenced-based curricula, including *High Scope* in centered-based Head Start and Early Head Start classrooms and *Parents as Teachers* in the home-based program. In all program options, instruction is intentional and individualized to meet each child's unique needs with students vibrantly engaged throughout their school day.



# Parent, Family, and Community Engagement

Head Start actively promotes parent, family and community engagement strategies designed to equip parents and guardians with the knowledge and skills necessary to ensure the best possible outcomes for themselves and their family. Deploying a multi-pronged approach, parents and guardians participate in a variety of child development learning opportunities, parenting classes, goal setting activities and serve in critical program leadership roles just to name a few.

Following is small sample of the activities parents and guardians participated in: ●●●

- Adult Education Opportunities
- Child Abuse Prevention
- Child Development
- Emotional Wellness
- Employment Skills
- Goal Setting
- Health and Nutrition
- Lead Poisoning Prevention
- Literacy Workshops
- Parent Committee Meetings
- Parent Education Rights & Responsibility
- Pedestrian Safety
- Positive Discipline
- School Readiness
- Stress/Time Management
- Support for Children with Disabilities

Following is a small sample of formal and informal community partnerships: ●●●●●

- Borrego Medical Health Care
- Community Action Partnerships of Riverside County
- Fiesta Educativa, Inc.
- Grandparents Raising Grandparents
- Inland Regional Center
- Riverside Community Health Foundation
- Riverside Fire Department
- Riverside Housing Authority
- Woman, Infants, and Children (WIC)
- Riverside County Departments of Mental Health, Public Health, Social Services, Economic Development Agency, Public Library, Sheriff's Department

2018-19

## PARENT SURVEY RESULTS ●●●●●



89%

I am comfortable talking to my child's teacher



93%

I have a positive relationship with my child



89%

I have confidence to advocate for my child's best interest

# Assessments

RCOE in partnership with its eleven Delegate Agencies, is committed to preparing students for kindergarten and beyond. By promoting school readiness with a focus on enhancing student cognitive, social and emotional development, the program

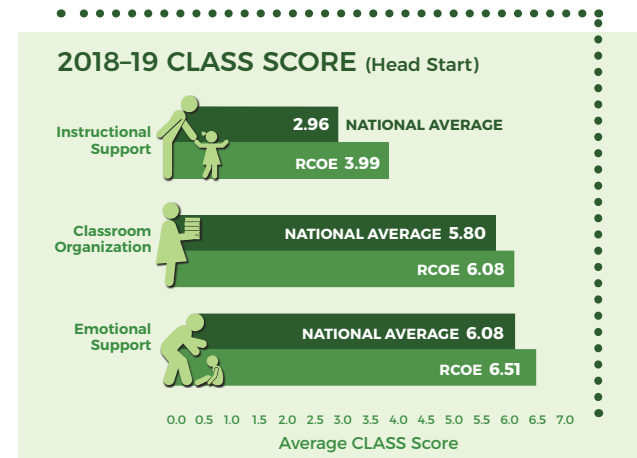
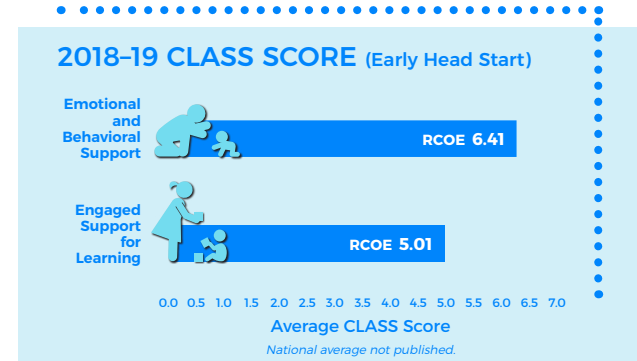
	EHS-CCP 8-17.9 Mo.	EHS-CCP 18-36+ Mo.	EHS 0-7.9 Mo.	EHS 8-17.9 Mo.	EHS 18-36+ Mo.
<b>1</b> <b>APPROACHES TO LEARNING</b> Children will develop their abilities to solve problems or make discoveries. 80% of infants and toddlers will demonstrate positive growth on DRDP measures ATL1 & ATL4 by Spring Assessment.	71%	66%	75%	65%	75%
<b>2</b> <b>SOCIAL &amp; EMOTIONAL</b> Children will show developing understanding of people's behaviors, feelings, thoughts, and individual characteristics. 80% of infants and toddlers will demonstrate positive growth on DRDP measures SED1 & SED2 by Spring Assessment.	46%	68%	92%	63%	71%
<b>3</b> <b>LANGUAGE AND LITERACY</b> Children will use language and non-verbal communication to convey needs, feelings and interest. 80% of infants and toddlers will demonstrate positive growth on DRDP measures LLD2, LLD3 & LLD4 by Spring Assessment.	64%	68%	89%	79%	77%
<b>4</b> <b>COGNITION &amp; GENERAL KNOWLEDGE</b> Children will develop the ability to compare, match and categorize different people or different things. 80% of infants and toddlers will demonstrate positive growth on DRDP measure COG2 & COG3 by Spring Assessment.	75%	63%	75%	79%	67%
<b>5</b> <b>PHYSICAL DEVELOPMENT &amp; HEALTH</b> Children will develop their abilities to use their hands to reach and manipulate objects. 80% of infants and toddlers will demonstrate positive growth on DRDP measure PDH1 & PDH4 by Spring Assessment.	42%	76%	75%	88%	75%



is able to utilize assessment data to determine School Readiness Goals progress and in turn strategically prioritize teacher training, professional development and coaching that focuses on intentional strategies.

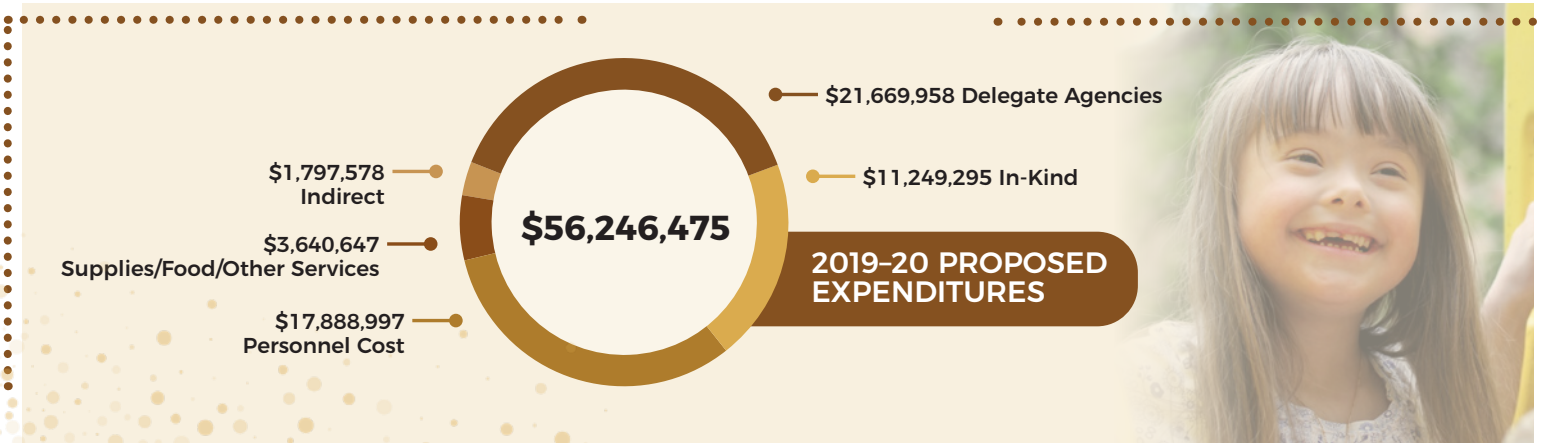
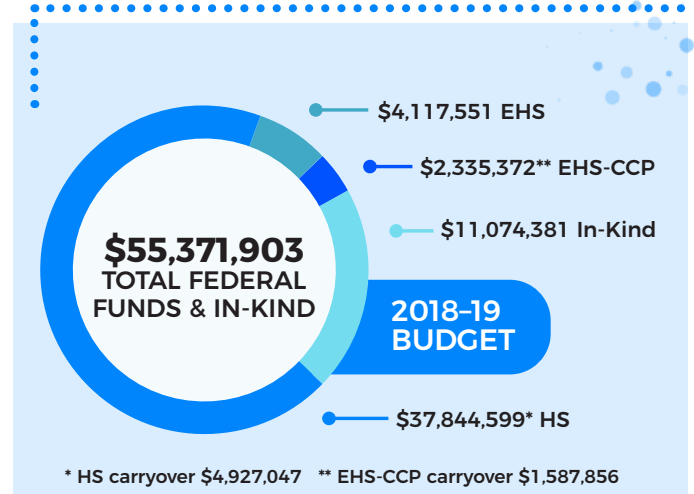
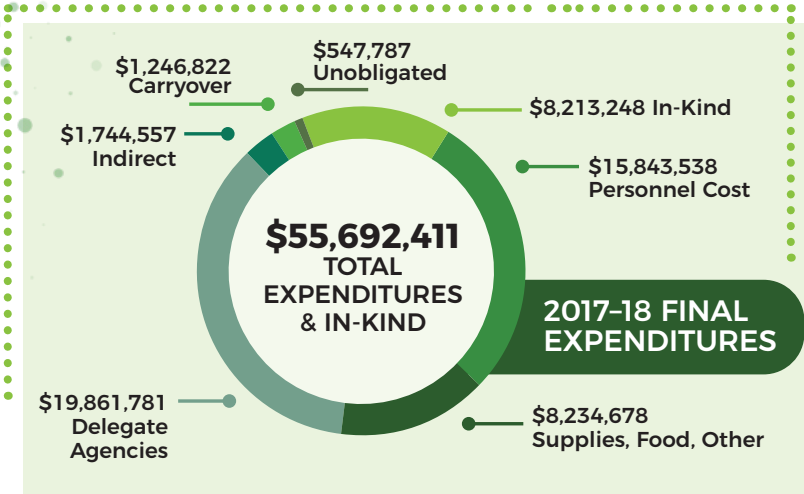
	HS 3 yrs.	HS 4 yrs.
<b>1 APPROACHES TO LEARNING</b> Children will increase their persistence in understanding and mastering a self-selected activity, even if challenging or difficult. 85% of the children will demonstrate positive growth on DRDP measures ATL4, ATL5 & ATL6 by Spring Assessment.	91%	90%
<b>2 SOCIAL &amp; EMOTIONAL</b> Children will increase their ability to demonstrate a variety of socially acceptable strategies to stop self from acting impulsively. 85% of the children will demonstrate positive growth on DRDP measures SED2 & SED4 by Spring Assessment.	91%	92%
<b>3 LANGUAGE AND LITERACY</b> Children will increase their awareness of sounds that make up language. 85% of the children will demonstrate positive growth on DRDP measures LLD3, LLD8, LLD9 & LLD10 by Spring Assessment.	91%	91%
<b>4 COGNITION &amp; GENERAL KNOWLEDGE</b> Children will increase their ability to reason logically, think critically, or use strategies to solve challenging problems. 85% of the children will demonstrate positive growth on DRDP measures COG2, COG4, COG5 & COG6 by Spring Assessment.	89%	91%
<b>5 PHYSICAL DEVELOPMENT &amp; HEALTH</b> Children will increase their ability to plan and coordinate use of grasp, release, strength and control of fingers and hands for functions and play activities.	91%	93%
<b>6 ENGLISH LANGUAGE DEVELOPMENT</b> Children will progress towards fluency in understanding English. 85% of the children will demonstrate positive growth on DRDP measures ELD1, ELD2 & ELD3 by Spring Assessment.	86%	94%

The program utilizes the Classroom Assessment Scoring System (CLASS®) observation instrument that assesses the quality of teacher-child interactions in center-based preschool classrooms. CLASS® includes three domains or categories of teacher-child interactions that support children's learning and development: (1) Emotional Support, (2) Classroom Organization, and (3) Instructional Support. Within each domain are dimensions that capture more specific details about teachers' interactions with children.



# Financials

The RCOE Fiscal Services Unit supports both RCOE and delegate agency programs with guidance and monthly financial reporting to policy council members and governing bodies, in addition to meeting regularly with the RCOE management team. The effectiveness of the Fiscal Services Unit is reflected in the positive results of annual, independent RCOE audits as well as three consecutively successful federal fiscal reviews.



# Program Leadership

## RIVERSIDE COUNTY OFFICE OF EDUCATION (GRANTEE)

- Riverside County Superintendent of Schools: Dr. Judy White
- RCOE Deputy Superintendent of Schools: Paul Jessup
- RCOE Assistant Superintendent Early Learning Services: Sharon Basket
- RCOE Head Start/ Early Had Start Executive Director: Dr. Esmirna Valencia

## DELEGATE PROGRAM DIRECTORS

- Coachella USD Head Start Delegate Director: Delilah Salado
- Desert Sands USD Head Start Delegate Director: Jay Rallion
- Hemet USD Head Start Delegate Director: Dr. Alice Chung
- Jurupa USD Head Start Delegate Director: Katrina Brooks
- Lake Elsinore USD Head Start Delegate Director: Dr. Frieda Brands
- Moreno Valley USD Head Start Delegate Director: Jennifer Adock
- Palm Springs USD Head Start Delegate Director: Myra Acosta
- Palo Verde USD Head Start Delegate Director: Maria Santos
- Riverside USD Head Start Delegate Director: Joe Nieto
- Romoland School District Head Start Delegate Director: Vanessa Rodriguez
- San Jacinto USD Head Start Delegate Director: Elizabeth Zaragoza

## 2018-19 POLICY COUNCIL MEMBERS

- Celeste Dunn, Chairperson
- Walker Beverly, Vice Chairperson
- Maribel Arias, Recording Secretary
- Isela Cesena, Assistant Secretary
- Lateera Gillon, Treasurer
- Tonesha Stocker, Assistant Treasurer
- Carlos Mata, Sergeant-at-Arms
- Rocio Quintanar, Planning Committee Officer
- Keria McKinley, Personnel/Bylaws Committee Officer



# Locations and Contact Information

## RIVERSIDE COUNTY OFFICE OF EDUCATION

(Grantee Operated Centers)  
Main Office  
Early Learning Education Services  
Head Start/ Early Head Start Programs  
3939 Thirteenth Street  
Riverside, CA 92501  
(951) 600-1800

## CENTERS

Arlanza Head Start  
Banning Head Start  
Beaumont 8th Street Head Start/Early  
Head Start/Early Head Start - CCP  
Beaumont Ave Head Start  
Bryant Park Head Start  
Casa Blanca Head Start/Early Head Start  
Collett Head Start  
Garretson Head Start  
Home Gardens Head Start  
Jefferson Head Start  
La Granada Head Start  
Murrieta Head Start  
Perris Head Start/Early Head Start/  
Early Head Start - CCP  
RCC Moreno Valley Head Start  
Stokoe Head Start/Early Head Start  
Temecula Head Start  
Verano Head Start

For more information on our  
**Head Start/Early Head Start Programs**,  
please visit us at [myheadstart.info](http://myheadstart.info) or  
call us at **(800) 600-1800**

**www.rcoe.us**

## DELEGATE OPERATED CENTERS

### COACHELLA VALLEY USD (760) 848-1030

Cesar Chavez Head Start  
John Kelly Head Start  
Las Palmitas Head Start  
Mecca Head Start  
Oasis Head Start  
Palm View Head Start  
Peter Pendleton Head Start  
Tlaquepaque Head Start  
Valley View Head Start  
Westside Head Start

### DESERT SANDS USD (760) 771-8678

Eisenhower (A/B) Head Start  
Hoover Head Start  
Jackson Head Start  
John Adams Early Learning Center  
Head Start  
Lyndon B. Johnson Head Start  
Palm Desert ECE Head Start  
Summer Fields Head Start  
Van Buren Head Start

### HEMET USD (951) 765-1648

Fruitvale Head Start  
Hemet Head Start  
Ramona Head Start

### JURUPA USD (951) 222-7850

Ina Ar buckle Head Start  
Pacific Avenue Head Start  
School Readiness Ctr Head Start  
Troth Head Start  
West Riverside Head Start

### LAKE ELSINORE USD (951) 253-7091

Heald Academy Head Start/  
Early Head Start  
Jeannette Ellis Center Head Start  
Lakeland Village School Head Start  
Machado Head Start  
Railroad Canyon Head Start

### MORENO VALLEY USD (951) 571-4716

Armada Head Start  
Butterfield Head Start  
Edgemont Head Start  
Rainbow Springs Head Start

### PALM SPRINGS USD (760) 416-8090

Agua Caliente Head Start  
Bubbling Wells Head Start  
Cathedral City Head Start  
Coyote Run Head Start  
Della Lindley Early Head Start  
Desert Highlands Head Start  
Julius Corsini Head Start  
Katherine Finchy Head Start  
Rio Vista Head Start  
Two Bunch Palms Head Start

### PALO VERDE USD (760) 922-4164

Palo Verde Head Start

### RIVERSIDE USD (951) 788-7135

Fremont Head Start  
Highgrove Head Start  
Jackson Head Start  
Jefferson Head Start  
Longfellow Head Start  
Madison Head Start  
Lincoln Early Head Start - CCP

### ROMOLAND SD (951) 928-2924

Harvest Valley Head Start  
Romoland Early Head Start

### SAN JACINTO USD (951) 654-1531

Hyatt Head Start  
San Jacinto Head Start